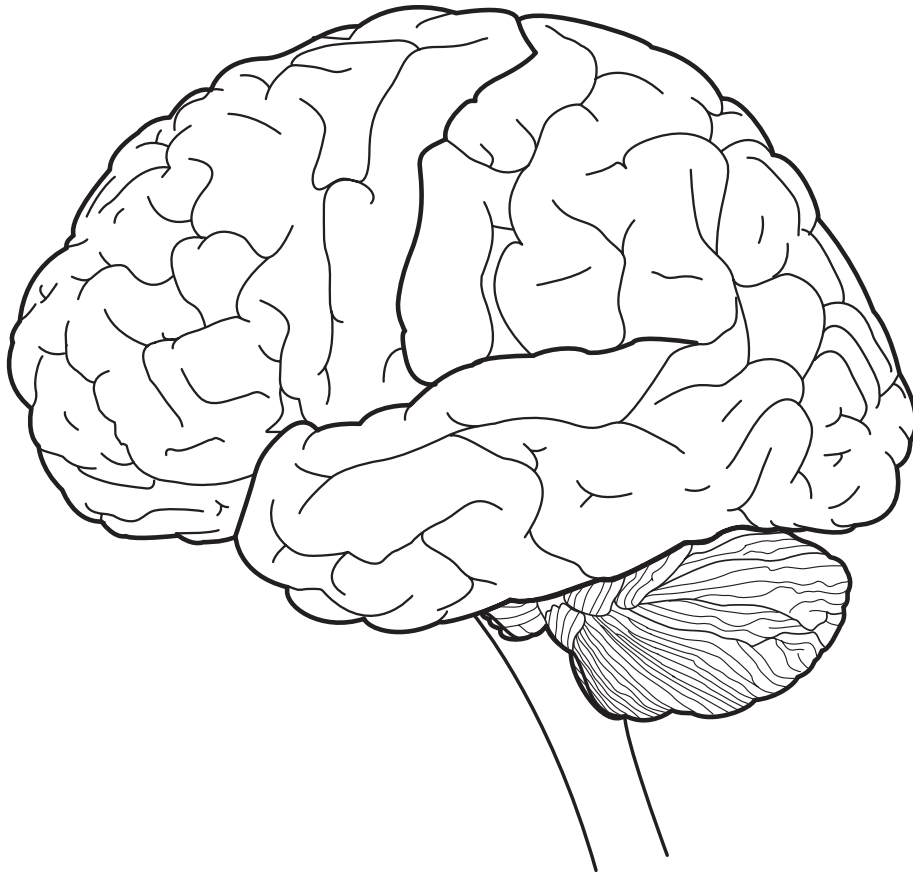


STUDENT WORKSHEET

"BRAIN ANATOMY" — ACTIVITY 1A



1. This part of the brain is a lobe found at the front of the brain and controls thinking and creating. _____ Color this part of the brain blue.
2. The _____ lobe helps us find our way and recognize objects and their uses, and experiences sensations (such as pain, pressure, touch, and temperature). Color this part of the brain green.
3. This part of the brain is a lobe found at the back of the head. It is here that messages from the eyes are interpreted. _____ Color this part of the brain red.
4. This lobe is found next to our ears. It helps us hear, plan our speech, and remember. _____ Color this yellow.
5. This part of the brain coordinates our physical skills and balance. _____ Color this part of the brain orange.
6. This part of the brain connects the rest of the brain to the spinal cord. _____ Color this part of the brain purple.