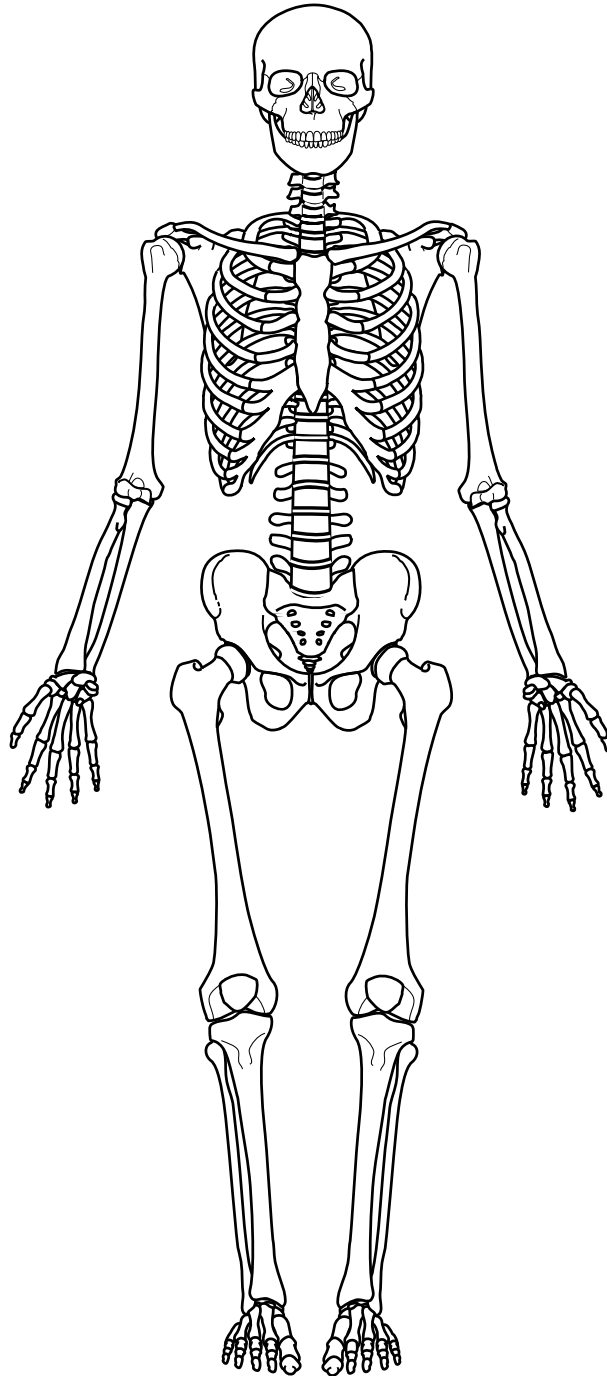


## ACTIVITY 2F: CLASSIFYING BONES

### BONE CLASSIFICATION

On the skeleton below, classify the bones of the body using a color-coding system. Complete the color key by assigning a color to represent the long bones, another color to represent the short bones, one for the flat bones and one for the irregular bones. Use the key to color the skeleton.



#### Bone Classification Color Key

= Long Bones

= Short Bones

= Flat Bones

= Irregular Bones