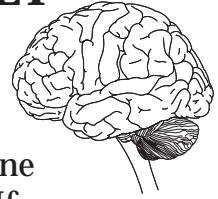


ACTIVITY 4A: TEACHER BACKGROUND SHEET

WHAT KIND OF "SMART" ARE YOU ?

Teacher Page



Our brain has the capacity to help us learn in many ways. Everyone gathers information and learns in the ways that best work for them. If we understand these different ways of learning, and identify the way(s) in which we best learn, we can promote successful learning experiences!

Materials:

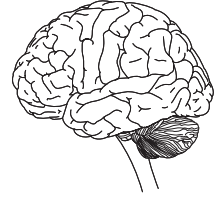
Learning Style Inventory
Strip of "data boxes"
Learning Style Data Sheet
Circle for circle graph

Learning Style Inventory Procedure:

1. Read through the 35 items.
2. As you read, if you think the statement could be truly said of you, then place a check in the blank.
3. Count up the number of checks. Record on the Learning Styles Data Sheet.
4. Look back at your inventory.
5. Count the number of checks you have for items 1 through 5 only. Assign a color for this number and code it on the data sheet.
6. Repeat step five for items 6 through 10, 11 through 14, 15 through 20, 21 through 25, 26 through 30, and 31 through 35. Assign each set of numbers its own color, then code each on the data sheet.
7. Using your new "color code," prepare a color-coded data strip. Color the number of boxes necessary to represent each color.
8. Do the calculations as shown on the data sheet.
9. Connect the ends of the color-coded data strip, forming a circle.
10. Place the data strip circle onto the graph circle, centering it carefully.
11. Very neatly, place a mark on the circle's edge at the beginning of the first colored section, then make a mark on the circle's edge at the end of the first colored section.
12. Continue around the edge for each colored section.
13. Using a ruler, make a straight line from each mark to the center of the circle. This will form a pie chart or circle graph.
14. Color in the sections of the pie in the colors that correspond to your colored-coded data strip.
15. Along the outside edge of the circle, write the name of the learning style that the color represents. You may use the names from Armstrong's work or from Gardner's work. Both of them represent the same learning strengths or intelligences. Use the chart on the following page to help identify the sections.

WHAT KIND OF "SMART" ARE YOU ?

Teacher Page



Inventory Items	Armstrong	Gardner
#1 through #5	Music Smart	Musical Intelligence
#6 through #10	People Smart	Interpersonal Intelligence
#11 through #15	Self Smart	Intrapersonal Intelligence
#16 through #20	Logic Smart	Logical Intelligence
#21 through #25	Body Smart	Kinesthetic Intelligence
#26 through #30	Picture Smart	Spatial Intelligence
#31 through #35	Word Smart	Linguistic Intelligence

16. Since everyone will have marked their inventories to reflect their learning styles, each circle graph will appear different.
17. Post the circle graphs around the room to show the variety of learning style strengths for your class.