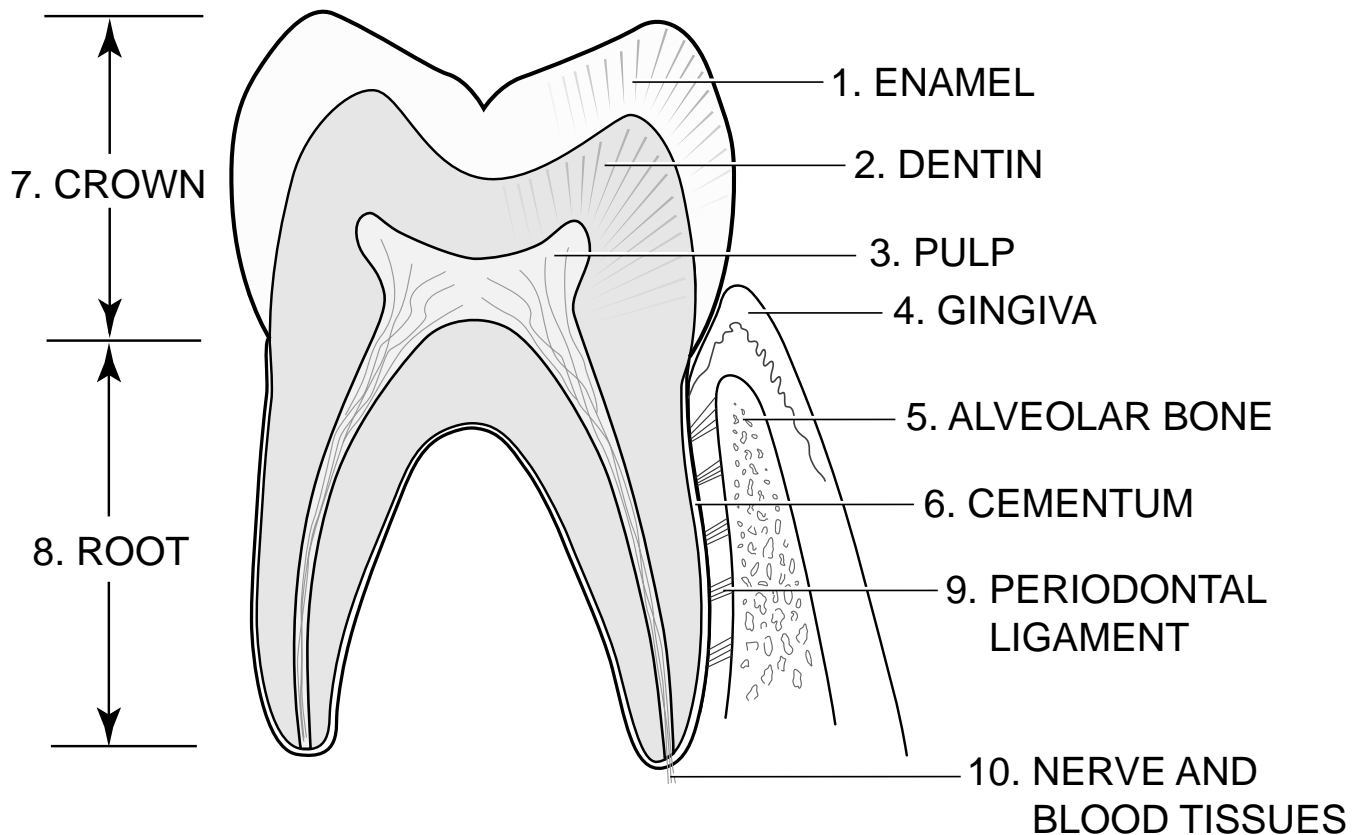


# ACTIVITY 1C

## THE PARTS OF THE TOOTH – TEACHER ANSWER KEY



1. **ENAMEL**—The hardest tissue in the body. It covers the crown.
2. **DENTIN**—The bone-like tissue that supports the enamel.
3. **PULP**—Contains nerve and blood vessels.
4. **GINGIVA**—The gums
5. **ALVEOLAR BONE**—The bone that supports and surrounds the roots of the teeth.
6. **CEMENTUM**—The thin, bone-like tissue that helps to connect the root to the jawbone.
7. **CROWN**—The part of the tooth you can see.
8. **ROOT**—Anchors tooth in jawbone.
9. **PERIODONTAL LIGAMENT**—Fibrous tissue which connects the roots to the bone.
10. **NERVES AND BLOOD VESSELS**—The nerves are sensory devices that act as pain receptors; blood vessels supply blood to the tooth.